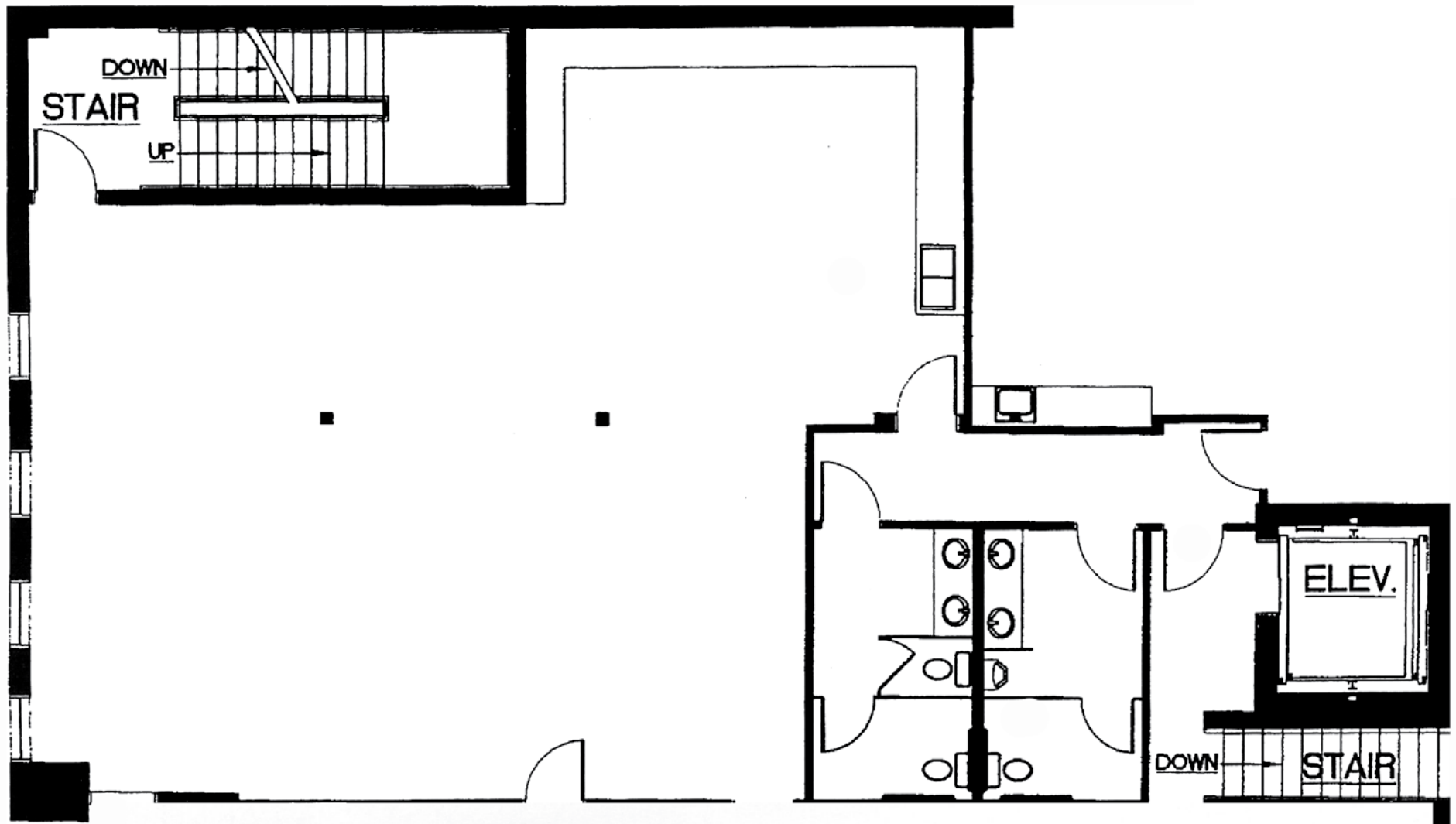


# SECOND FLOOR STUDIO

30' x 36'



Please draw the set-up arrangement of tables and chairs you require. For reference, the small rectangle represents the size of our furniture to scale of the room diagram. Use an X to indicate the placement of each chair.

Available for use:

- 11 - 30" x 6' rectangular tables
- 10 - 14" small child plastic chairs
- 60 - adult plastic chairs
- 15 - padded folding chairs