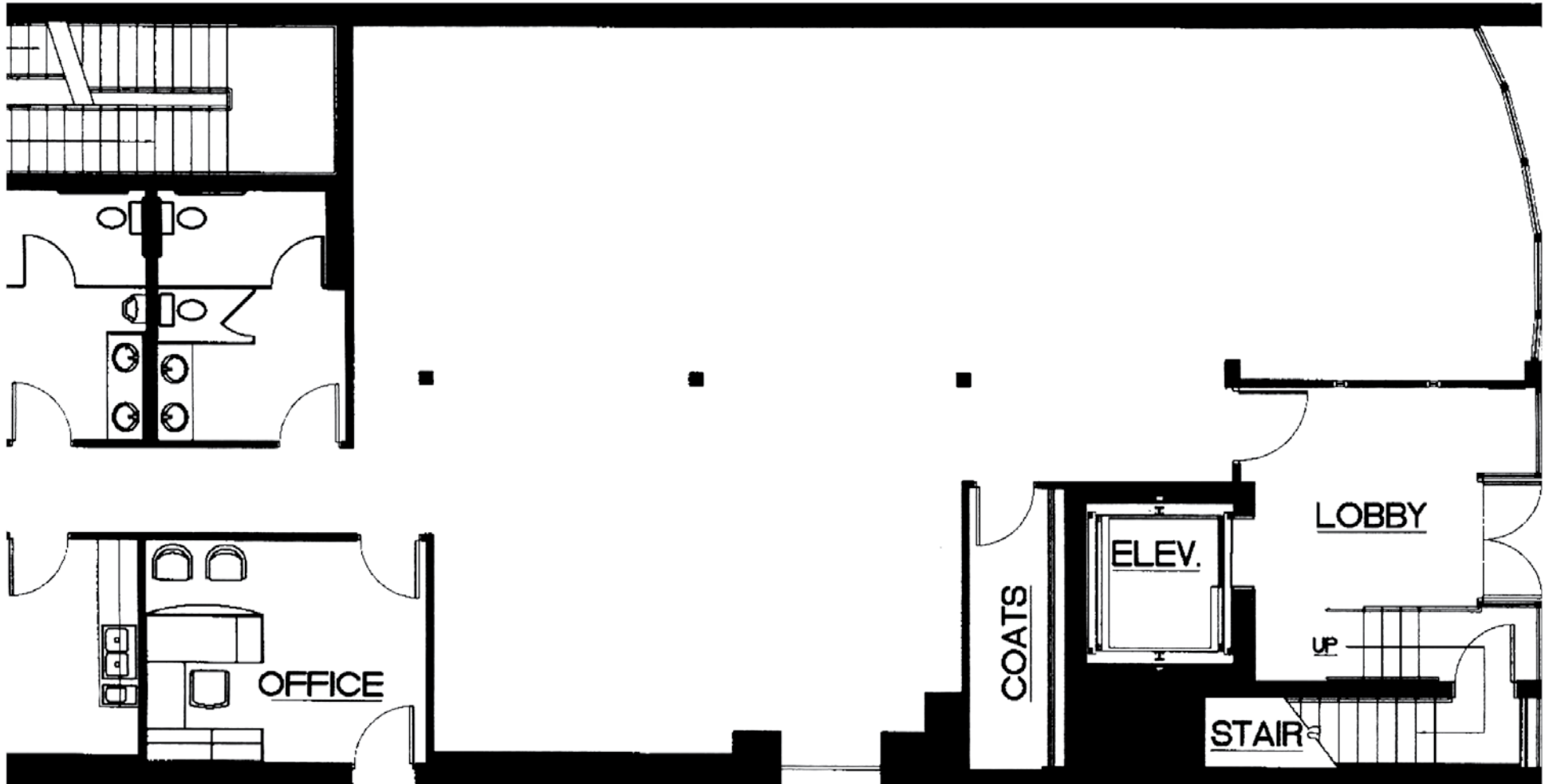


ANNE LLOYD GALLERY

38' x 60'



Please draw the set-up arrangement of tables and chairs you require. For reference, the small rectangle represents the size of our furniture to scale of the room diagram. Use an X to indicate the placement of each chair.

Available for use:

- 12 - 5ft. round tables
- 8 - 30" x 6' rectangular tables
- 60 - padded folding chairs
- 60 - stackable plastic chairs